

CONNECTING A COMPUTER TO TAMPERE HALL'S CUSTOMER NETWORK

WIRELESS NETWORK (802.11b)

Dear Customer,

We kindly request you to ensure that any computer that is to be connected to our customer network has an anti-virus program which has been updated with the most recent virus definitions.

We also recommend the use of an individual firewall for your computer.

Connection to the wireless network also requires:

- a WLAN 802.11b standard compatible wireless network card.
- a user name and a password, obtainable from the front-of-house staff at the Info Desk in the Main Foyer..

The connection for a specific computer; the user name and password permit an internet connection only to the machine in which they were first activated.

The wireless connection covers the foyers, auditoriums of main building (except Main Auditorium) , Park Hall and Park foyers.

CONNECTING TO THE INTERNET

Open your internet browser and enter your desired www address (URL) in the address box and press **Enter**. The program will ask you for your user name and password. When you enter these, you will be connected to the internet.

FIXED NETWORK CONNECTION (20 Mb / Max. 2.5Mb/s theoretical band)

Dear Customer,

We kindly request you to ensure that any computer that is to be connected to our customer network has an anti-virus program which has been updated with the most recent virus definitions.

We also recommend the use of an individual firewall for your computer.

The computer's settings must have the DHCP protocol activated for automatic distribution of network settings.

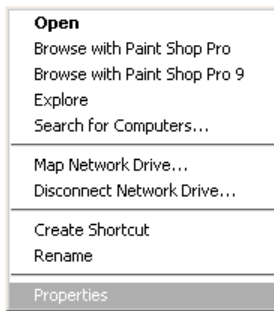
The proxy settings for your Internet browser must be removed.

A fixed network connection must be ordered not later than two weeks before the event.

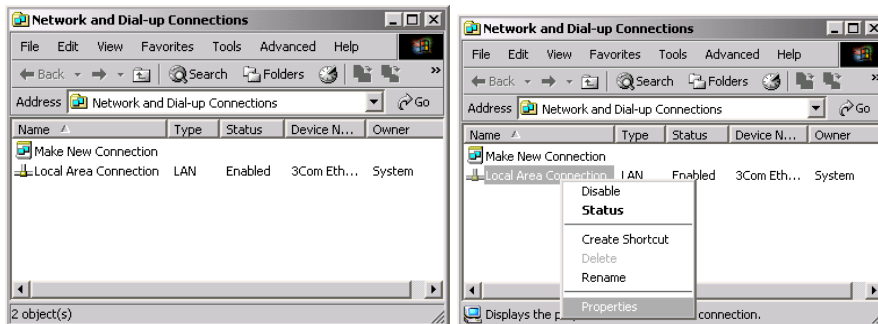
Alterations to firewall settings (e.g. VPN) are possible, so in-coming traffic is permissible by special agreement.

AUTOMATIC SEARCH FOR NETWORK SETTINGS. WINDOWS 2000 / XP

Click the **My Network Places** icon on the desk top and select **Properties**.



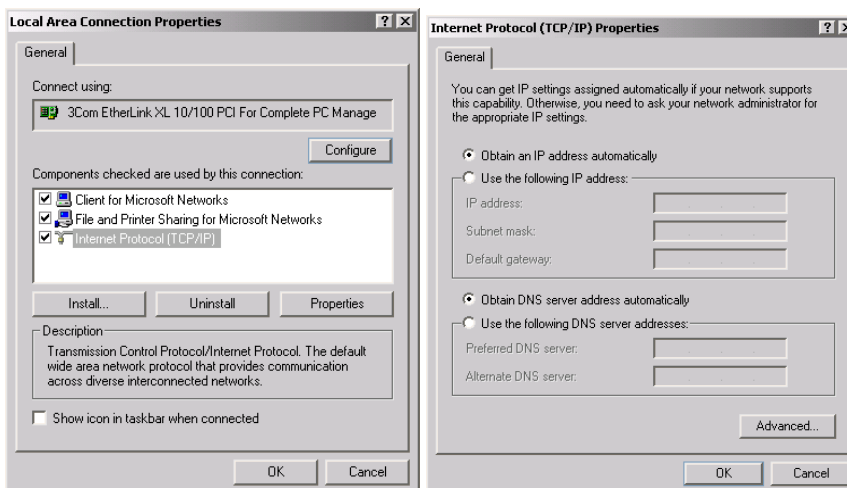
In the next window, right-click **Local Area Connection** and select **Properties**:



Then activate **Internet Protocol (TCP/IP)** and click **Properties**. In the next window, check the boxes for following selections:

Obtain an IP address automatically
Obtain DNS server address automatically

Press **OK**. Re-boot your computer if requested to do so.



Tampere-talo Oy/ IT-palvelut:
PL 16 33101 TAMPERE
Finland
Puh. 358 3 2434 111
ilkka.loueranta@tampere-talo.fi
seppo.heikkila@tampere-talo.fi